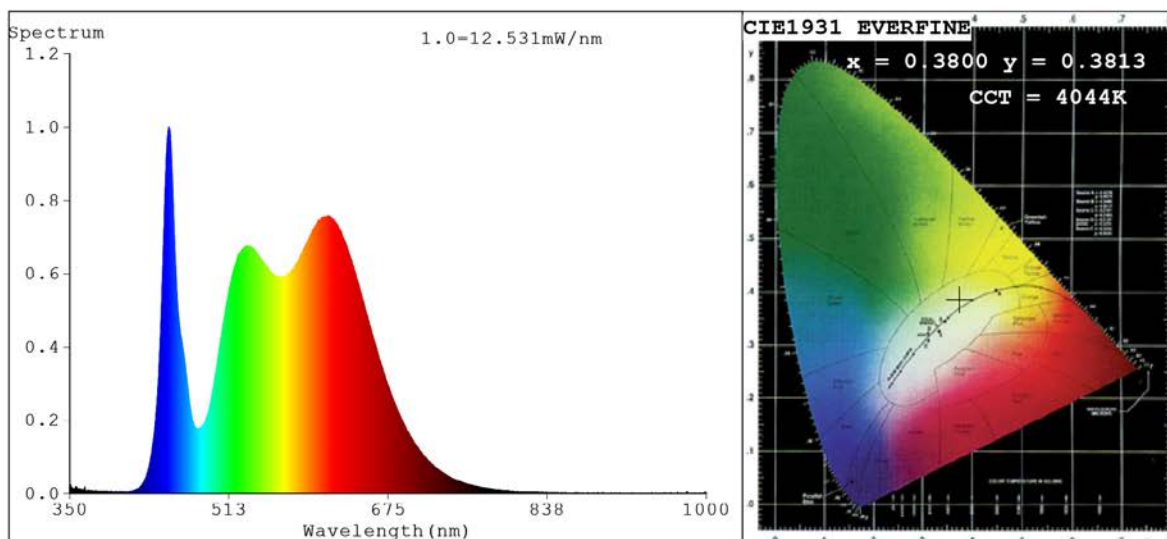


Spectrum Test Report



Color Parameters:

Chromaticity Coordinate: $x=0.3800$ $y=0.3813$ $u'=0.2230$ $v'=0.5035$
 $CCT=4044K$ ($Duv=0.0022$) Dominant WL: $L_d = 577.7nm$ Purity=28.5%
 Ratio: R=19.9% G=76.8% B=3.3%; Peak WL: $L_p=451.2nm$ FWHM=17.1nm
 Render Index: $R_a=91.9$ CRI=87.1 TM30: $R_f=90$ $R_g=101$
 R1 =95 R2 =93 R3 =89 R4 =94 R5 =92 R6 =90 R7 =95
 R8 =87 R9 =61 R10=81 R11=92 R12=63 R13=94 R14=93 R15=91

Photo Parameters:

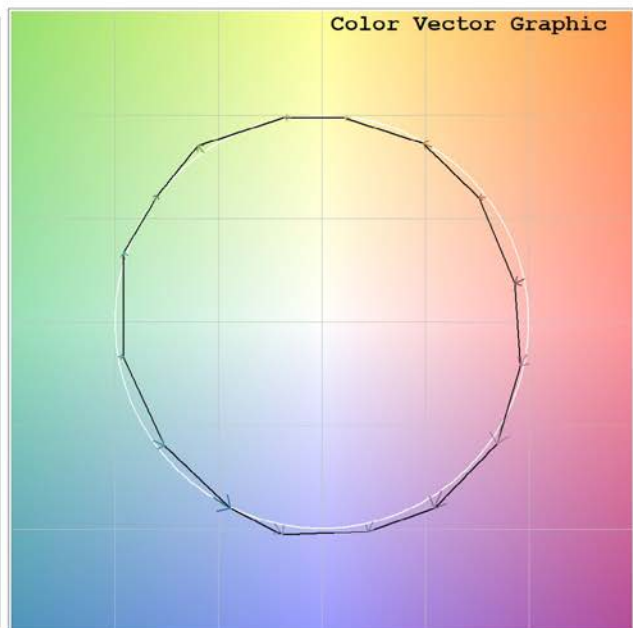
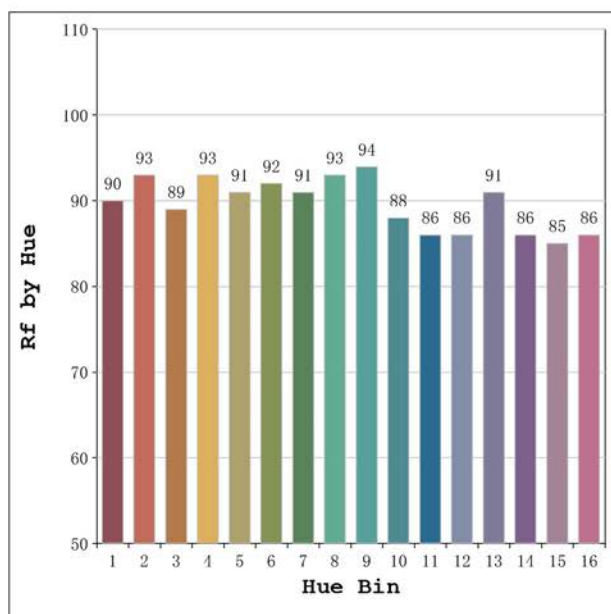
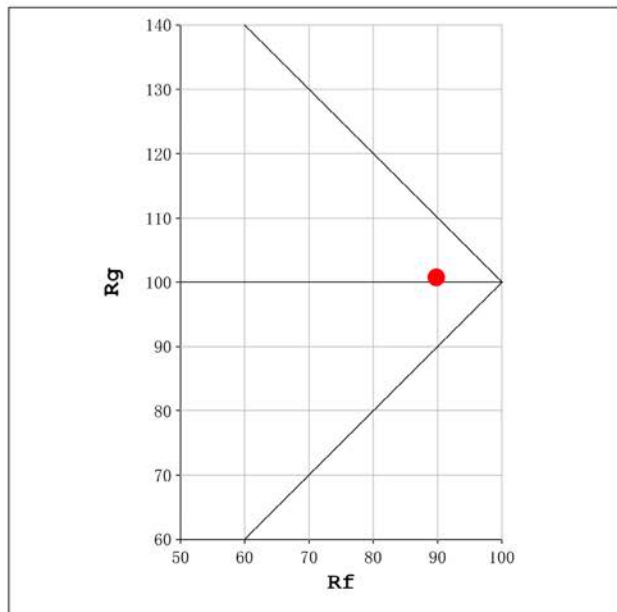
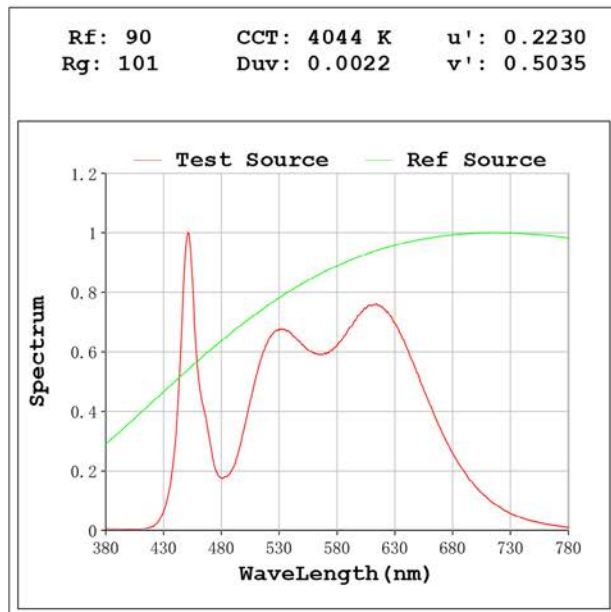
Flux = 559.2 lm Eff. : 109.35 lm/W Fe = 1.796 W

Electrical parameters:

V = 23.998 V I = 0.2131 A P = 5.114 W PF = 1.000

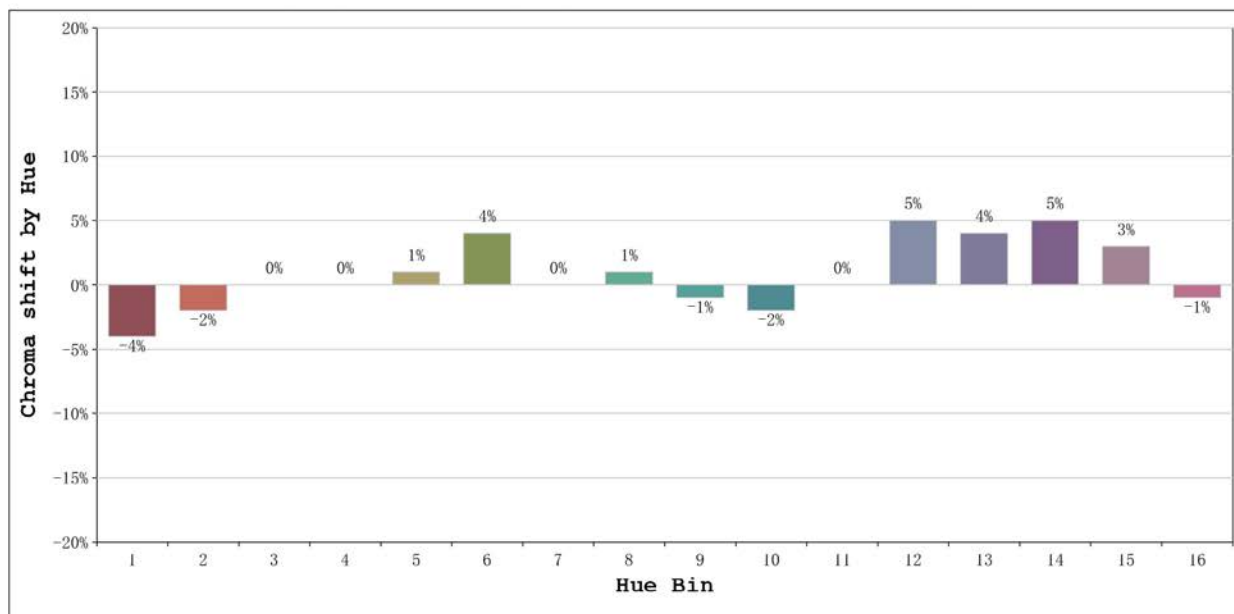
Status: Integral T = 2000 ms Ip = 36781 (56%)

Model: Ecoled Élite 5 Gold 4000	Number: 31.162
Tester: Sergio Carneros	Date: 2025-02-12 13:01:54
Temperature: 20Deg	Humidity: 50%
Manufacturer: Luz Negra	Remarks: 100cm de tira flexible



Model:Ecoled Élite 5 Gold 4000
 Tester:Sergio Carneros
 Temperature:20Deg
 Manufacturer:Luz Negra

Number: 31.162
 Date:2025-02-12 13:01:54
 Humidity:50%
 Remarks:100cm de tira flexible



			Graphic shift(%)	
Hue Bin	Hue Angle	Rf	Chroma	Hue
1	0.0° - 22.5°	90	-4	0
2	22.5° - 45.0°	93	-2	1
3	45.0° - 67.5°	89	0	5
4	67.5° - 90.0°	93	0	2
5	90.0° - 112.5°	91	1	3
6	112.5° - 135.0°	92	4	1
7	135.0° - 157.5°	91	0	-2
8	157.5° - 180.0°	93	1	-3
9	180.0° - 202.5°	94	-1	0
10	202.5° - 225.0°	88	-2	5
11	225.0° - 247.5°	86	0	10
12	247.5° - 270.0°	86	5	5
13	270.0° - 292.5°	91	4	-2
14	292.5° - 315.0°	86	5	-6
15	315.0° - 337.5°	85	3	-8
16	337.5° - 360.0°	86	-1	-5

Model:Ecoled Élite 5 Gold 4000
Tester:Sergio Carneros
Temperature:20Deg
Manufacturer:Luz Negra

Number: 31.162
Date:2025-02-12 13:01:54
Humidity:50%
Remarks:100cm de tira flexible